

Type:
DeepClean Extra Anti-Ligature Radiator Guard - DCE+HMP01

Model:
Gradient Top - Floor Mounted

Manufacture:
2mm Zintec or 2mm Magnelis for wet environments
10mm Radius corners
Internal strengthening strut
Full height front access door (Pat. No. 2 410 544)
IP3x Test Compliant (To BS EN 60529) Grille, incorporating 2mm holes at 4mm centres in triangular pitch formation.

All Apertures:
Low level cutouts for pipework programmed into manufacture.

Sizes:
Largest size tested - 1200w x 960h x 260d

Finish:
Polyester Powder Coated RAL 9003
Patented BioCote® Anti-Microbial Agent
Other RAL colours available

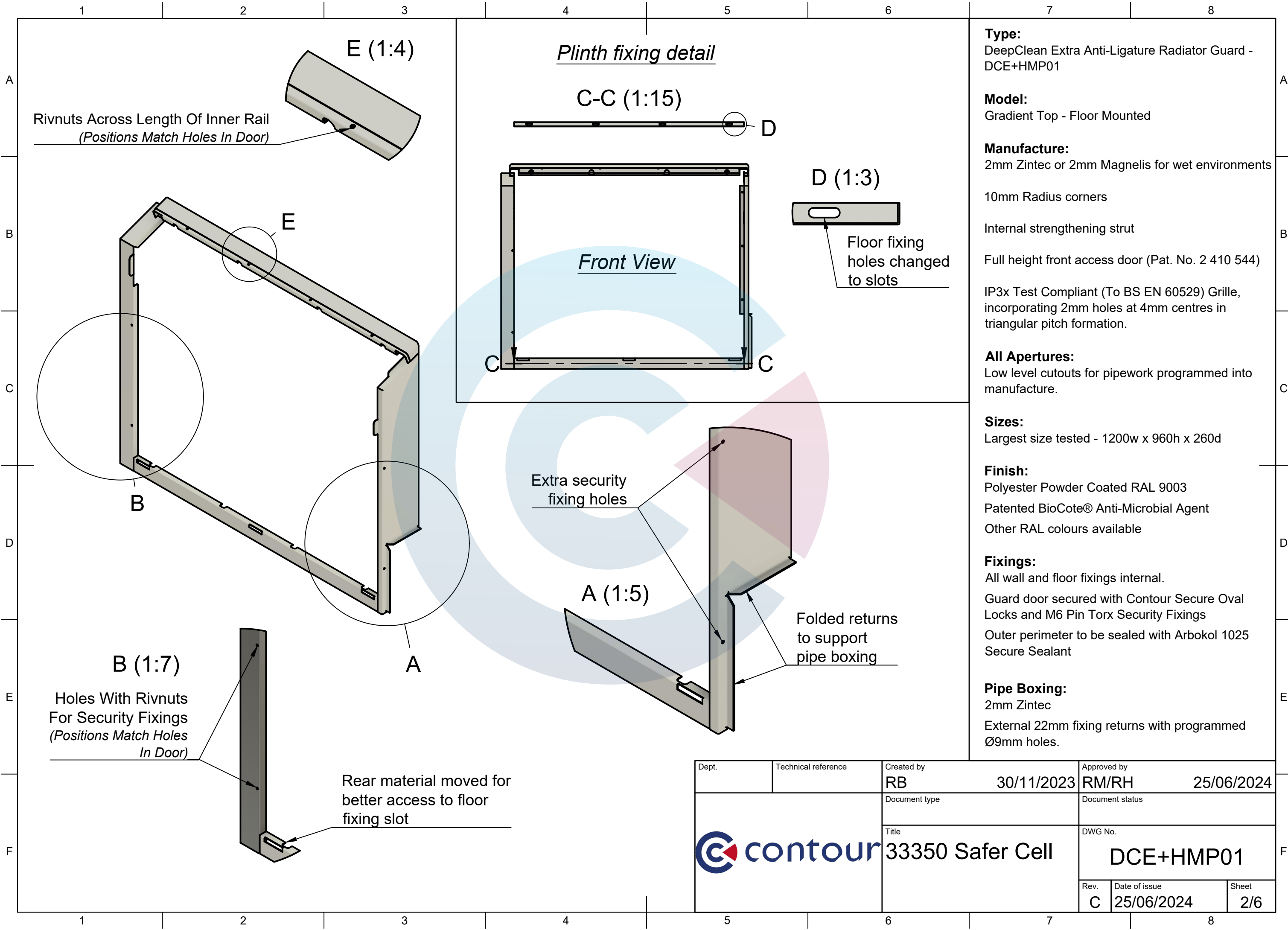
Fixings:
All wall and floor fixings internal.
Guard door secured with Contour Secure Oval Locks and M6 Pin Torx Security Fixings
Outer perimeter to be sealed with Arbokol 1025 Secure Sealant

Pipe Boxing:
2mm Zintec
External 22mm fixing returns with programmed Ø9mm holes.

Revision History			
Rev	Description	Date	Approved
B	Drawing issued	15/02/2024	RM/RH
C	Moved side fixing lower. Fold and cutout detail reversed on underside of door	25/06/2024	RM/RH

Dept.	Technical reference	Created by RB	30/11/2023	Approved by RM/RH	25/06/2024
		Document type	Document status		
		Title 33350 Safer Cell	DWG No. DCE+HMP01		
		Rev. C	Date of issue 25/06/2024	Sheet 1/6	





Type:
DeepClean Extra Anti-Ligature Radiator Guard - DCE+HMP01

Model:
Gradient Top - Floor Mounted

Manufacture:
2mm Zintec or 2mm Magnelis for wet environments
10mm Radius corners
Internal strengthening strut
Full height front access door (Pat. No. 2 410 544)
IP3x Test Compliant (To BS EN 60529) Grille, incorporating 2mm holes at 4mm centres in triangular pitch formation.

All Apertures:
Low level cutouts for pipework programmed into manufacture.

Sizes:
Largest size tested - 1200w x 960h x 260d

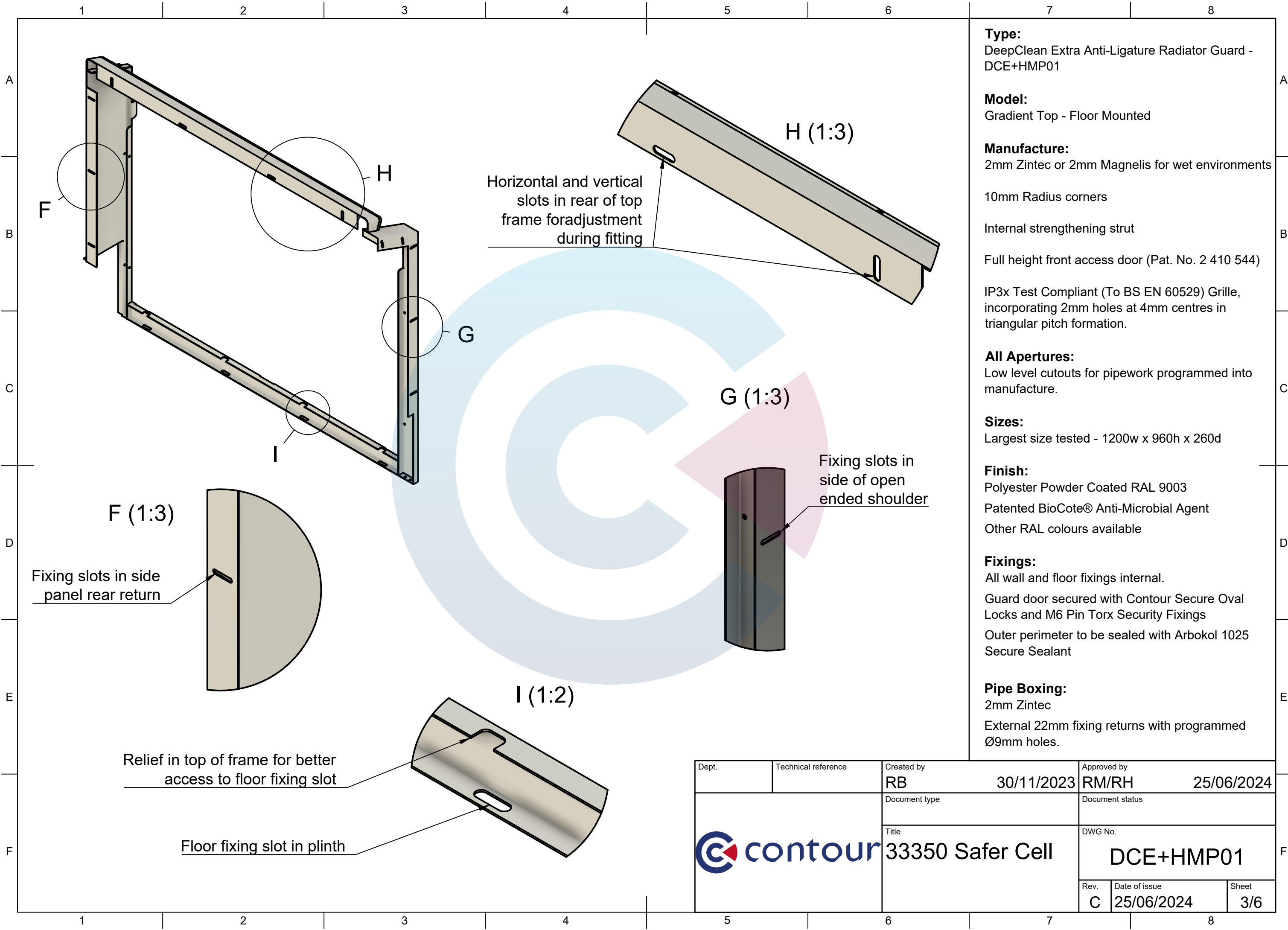
Finish:
Polyester Powder Coated RAL 9003
Patented BioCote® Anti-Microbial Agent
Other RAL colours available

Fixings:
All wall and floor fixings internal.
Guard door secured with Contour Secure Oval Locks and M6 Pin Torx Security Fixings
Outer perimeter to be sealed with Arbokol 1025 Secure Sealant

Pipe Boxing:
2mm Zintec
External 22mm fixing returns with programmed Ø9mm holes.

Dept.	Technical reference	Created by RB	30/11/2023	Approved by RM/RH	25/06/2024
Document type			Document status		
Title 33350 Safer Cell			DWG No. DCE+HMP01		
Rev. C	Date of issue 25/06/2024	Sheet 2/6			





Type:
DeepClean Extra Anti-Ligature Radiator Guard - DCE+HMP01

Model:
Gradient Top - Floor Mounted

Manufacture:
2mm Zintec or 2mm Magnelis for wet environments
10mm Radius corners
Internal strengthening strut
Full height front access door (Pat. No. 2 410 544)
IP3x Test Compliant (To BS EN 60529) Grille, incorporating 2mm holes at 4mm centres in triangular pitch formation.

All Apertures:
Low level cutouts for pipework programmed into manufacture.

Sizes:
Largest size tested - 1200w x 960h x 260d

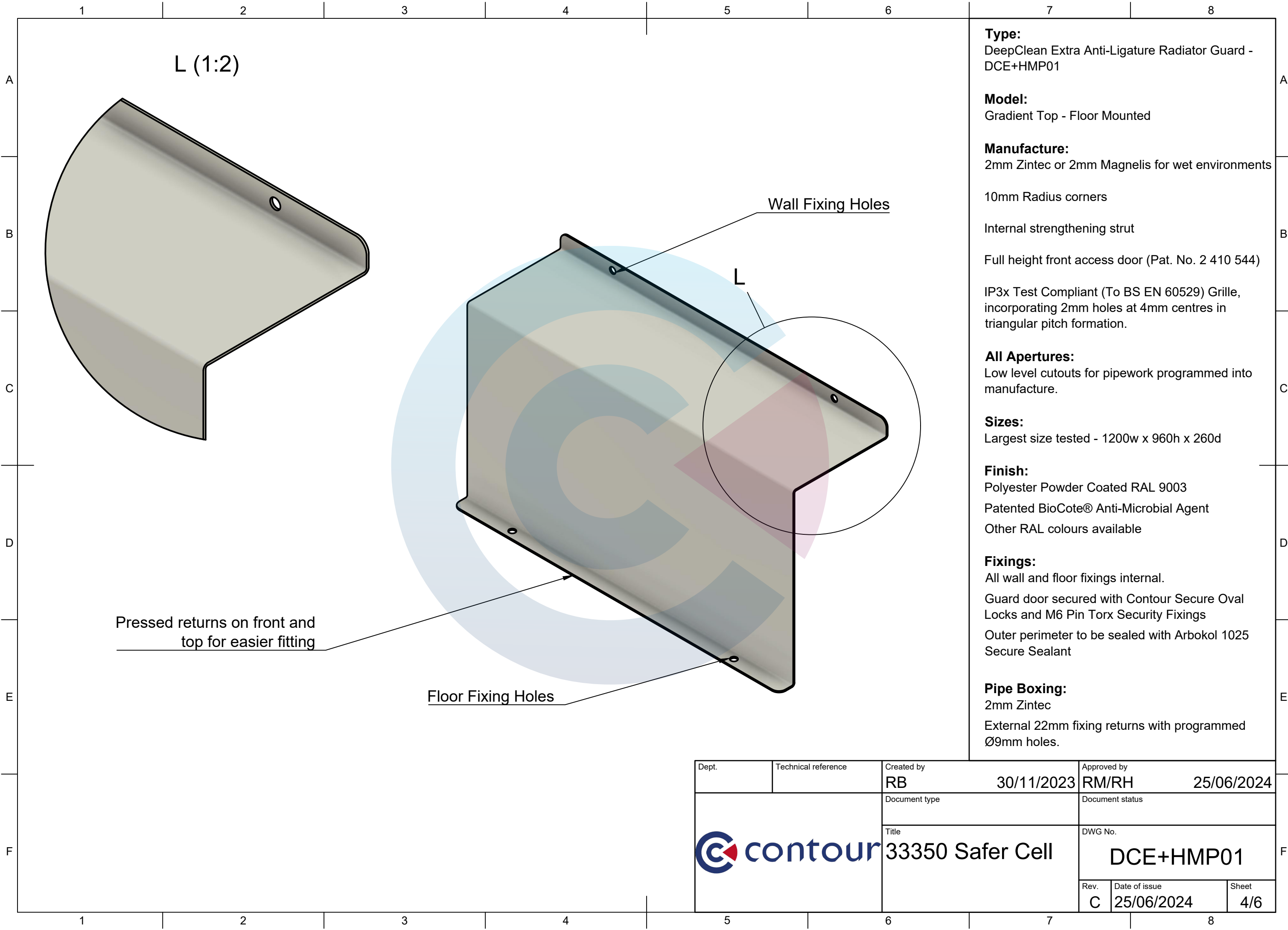
Finish:
Polyester Powder Coated RAL 9003
Patented BioCote® Anti-Microbial Agent
Other RAL colours available

Fixings:
All wall and floor fixings internal.
Guard door secured with Contour Secure Oval Locks and M6 Pin Torx Security Fixings
Outer perimeter to be sealed with Arbokol 1025 Secure Sealant

Pipe Boxing:
2mm Zintec
External 22mm fixing returns with programmed Ø9mm holes.

Dept.	Technical reference	Created by RB	30/11/2023	Approved by RM/RH	25/06/2024
		Document type	Document status		
		Title 33350 Safer Cell	DWG No. DCE+HMP01		
Rev.	Date of issue	Sheet			
C	25/06/2024	3/6			





L (1:2)

Wall Fixing Holes

L

Pressed returns on front and top for easier fitting

Floor Fixing Holes

Type:
DeepClean Extra Anti-Ligature Radiator Guard - DCE+HMP01

Model:
Gradient Top - Floor Mounted

Manufacture:
2mm Zintec or 2mm Magnelis for wet environments

10mm Radius corners

Internal strengthening strut

Full height front access door (Pat. No. 2 410 544)

IP3x Test Compliant (To BS EN 60529) Grille, incorporating 2mm holes at 4mm centres in triangular pitch formation.

All Apertures:
Low level cutouts for pipework programmed into manufacture.

Sizes:
Largest size tested - 1200w x 960h x 260d

Finish:
Polyester Powder Coated RAL 9003
Patented BioCote® Anti-Microbial Agent
Other RAL colours available

Fixings:
All wall and floor fixings internal.
Guard door secured with Contour Secure Oval Locks and M6 Pin Torx Security Fixings
Outer perimeter to be sealed with Arbokol 1025 Secure Sealant

Pipe Boxing:
2mm Zintec
External 22mm fixing returns with programmed Ø9mm holes.

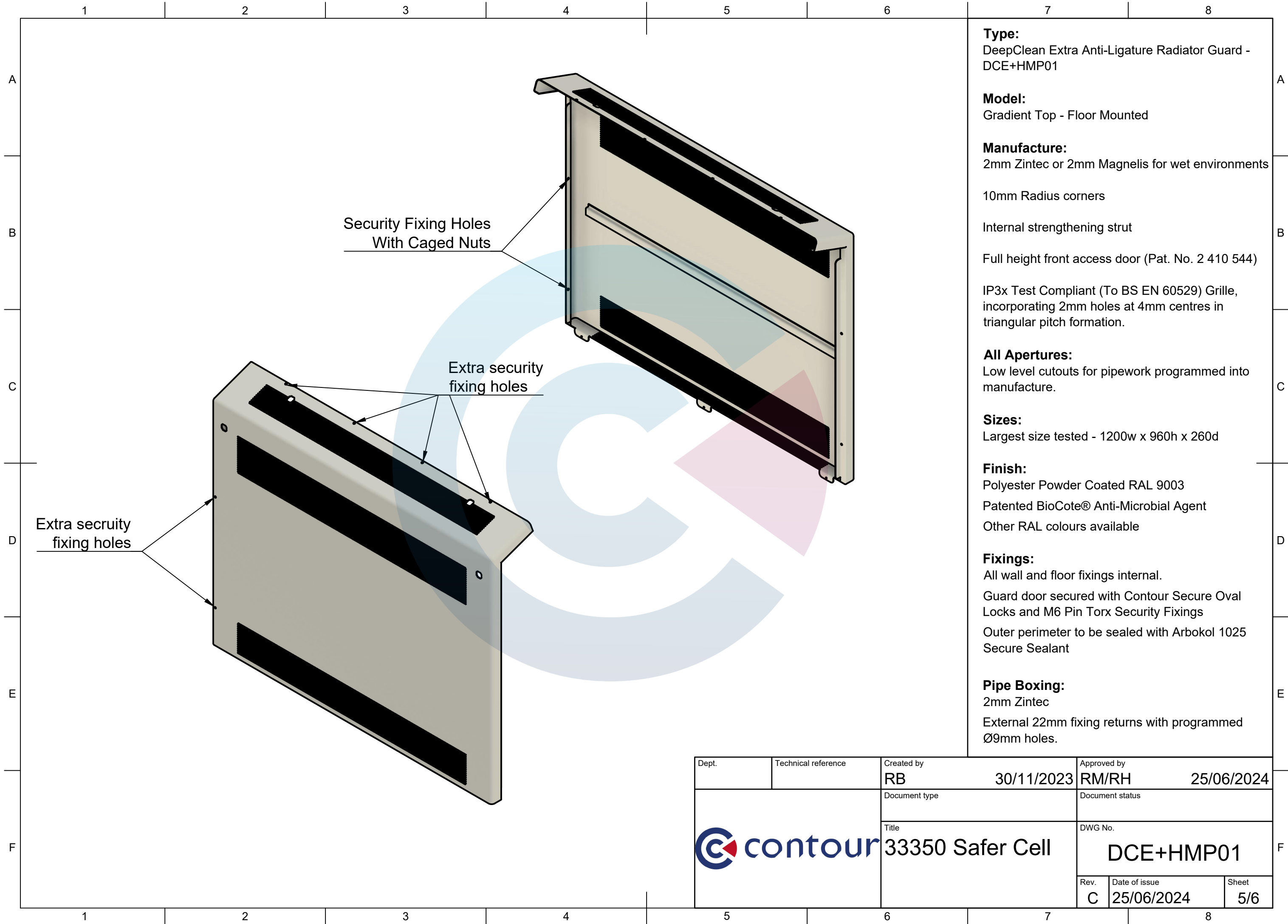
Dept.	Technical reference	Created by RB	30/11/2023	Approved by RM/RH	25/06/2024
		Document type	Document status		
		Title	DWG No.		
		33350 Safer Cell	DCE+HMP01		
Rev.	Date of issue	Sheet			
C	25/06/2024	4/6			



33350 Safer Cell

DCE+HMP01

Rev. C Date of issue 25/06/2024 Sheet 4/6



Type:
DeepClean Extra Anti-Ligature Radiator Guard - DCE+HMP01

Model:
Gradient Top - Floor Mounted

Manufacture:
2mm Zintec or 2mm Magnelis for wet environments

10mm Radius corners

Internal strengthening strut

Full height front access door (Pat. No. 2 410 544)

IP3x Test Compliant (To BS EN 60529) Grille, incorporating 2mm holes at 4mm centres in triangular pitch formation.

All Apertures:
Low level cutouts for pipework programmed into manufacture.

Sizes:
Largest size tested - 1200w x 960h x 260d

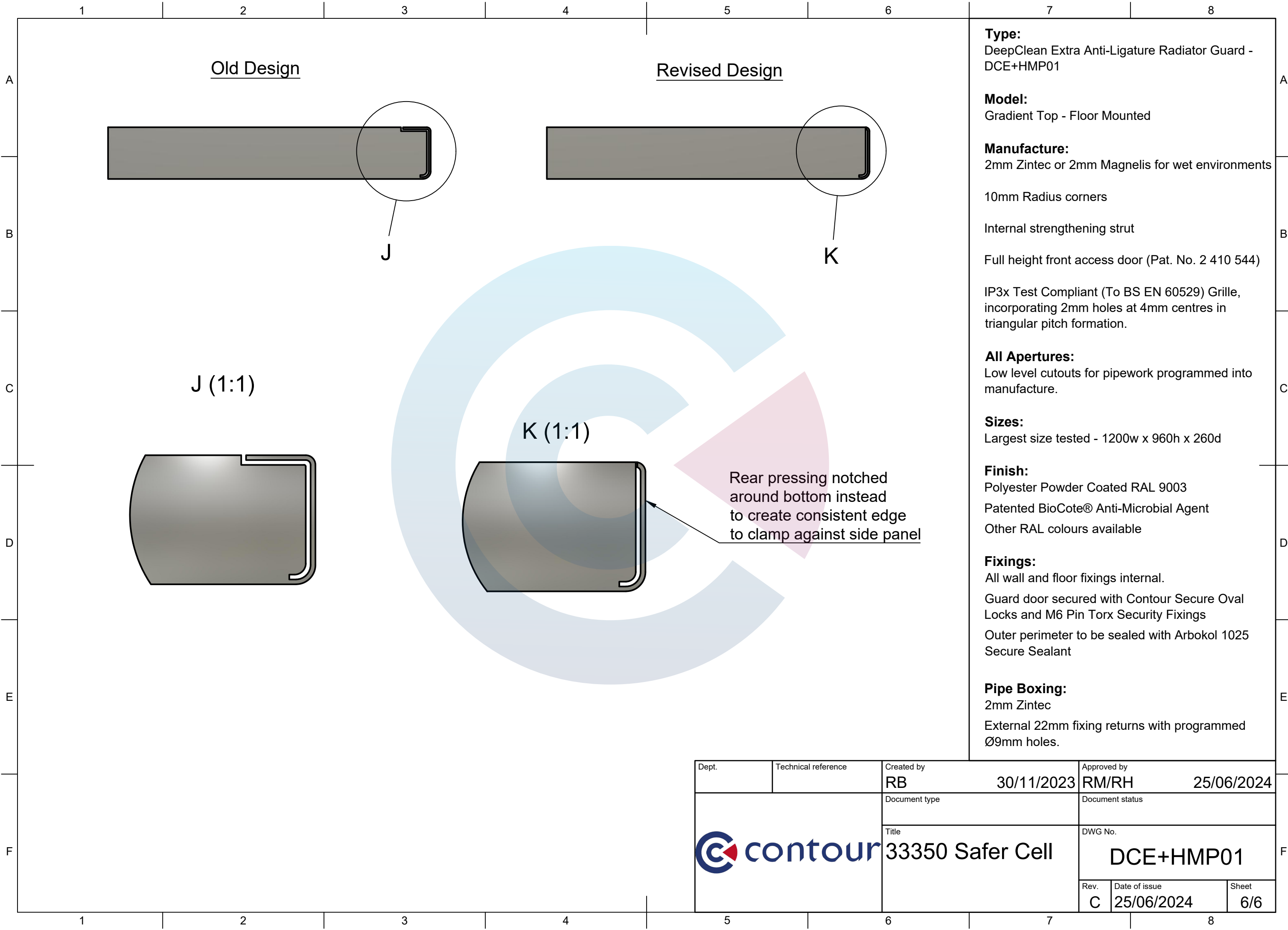
Finish:
Polyester Powder Coated RAL 9003
Patented BioCote® Anti-Microbial Agent
Other RAL colours available

Fixings:
All wall and floor fixings internal.
Guard door secured with Contour Secure Oval Locks and M6 Pin Torx Security Fixings
Outer perimeter to be sealed with Arbokol 1025 Secure Sealant

Pipe Boxing:
2mm Zintec
External 22mm fixing returns with programmed Ø9mm holes.

Dept.	Technical reference	Created by RB	30/11/2023	Approved by RM/RH	25/06/2024
		Document type	Document status		
		Title	DWG No.		
		33350 Safer Cell	DCE+HMP01		
Rev.	Date of issue	Sheet			
C	25/06/2024	5/6			





Old Design

Revised Design

J

K

J (1:1)

K (1:1)

Rear pressing notched around bottom instead to create consistent edge to clamp against side panel

Type:
DeepClean Extra Anti-Ligature Radiator Guard - DCE+HMP01

Model:
Gradient Top - Floor Mounted

Manufacture:
2mm Zintec or 2mm Magnelis for wet environments

10mm Radius corners

Internal strengthening strut

Full height front access door (Pat. No. 2 410 544)

IP3x Test Compliant (To BS EN 60529) Grille, incorporating 2mm holes at 4mm centres in triangular pitch formation.


All Apertures:
Low level cutouts for pipework programmed into manufacture.

Sizes:
Largest size tested - 1200w x 960h x 260d

Finish:
Polyester Powder Coated RAL 9003
Patented BioCote® Anti-Microbial Agent
Other RAL colours available

Fixings:
All wall and floor fixings internal.
Guard door secured with Contour Secure Oval Locks and M6 Pin Torx Security Fixings
Outer perimeter to be sealed with Arbokol 1025 Secure Sealant

Pipe Boxing:
2mm Zintec
External 22mm fixing returns with programmed Ø9mm holes.

Dept.	Technical reference	Created by RB	30/11/2023	Approved by RM/RH	25/06/2024
		Document type	Document status		
		Title 33350 Safer Cell	DWG No. DCE+HMP01		
Rev. C	Date of issue 25/06/2024	Sheet 6/6			